

SPECKART

Step-by-step build





Try to ensure all key components have been sourced to enable the build to be completed in a timely manor



Ensure you have a flat, level surface to work from at the start.

Pre-cut and drill all pieces required for the lower section of the chassis, as per cutting list.



Weld all pieces together, as per drawing, ensuring all corners are square and chassis is level to base.



Fit pre made front axle, as per drawing, to axle blocks, ensuring all measurements are correct and equal, and axle is square to chassis, weld in place.



Temporary bolt front axle blocks to the chassis.





Take hoop bars from cutting list, weld together ensure square and equal, a quick template maybe of use as we have used here.

Fit front and rear hoops to lower chassis, as per drawing. Ensure both are square and upright





Fit upper steering column bracket, ensure central to hoop.

Fit the 2 cross bars, as per cutting list, these should coincide with the hoops already installed.



Fit lower steering column bracket to front bar of lower chassis, ensure central.



Form front section, as per cutting list and drawing, a template maybe useful as we have here.

Add front bar, bent as per drawing.



Fit front section bars to chassis, ensuring upright and square



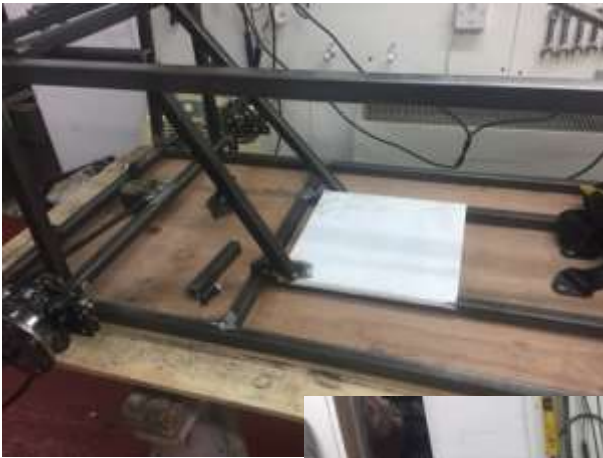
Option 1
Fit rear stabilising bracket as
per drawing



Fit rear section of Kart as
per cutting list and
drawing, ensure all parts
are square to chassis



Option 2
Fit stabilising
rods and
bracket



Construct Seat using
12.5mm ply, as per Drawing
and cutting list



Cut the seat assembly as per cutting list and weld together as per drawing, or to your design.





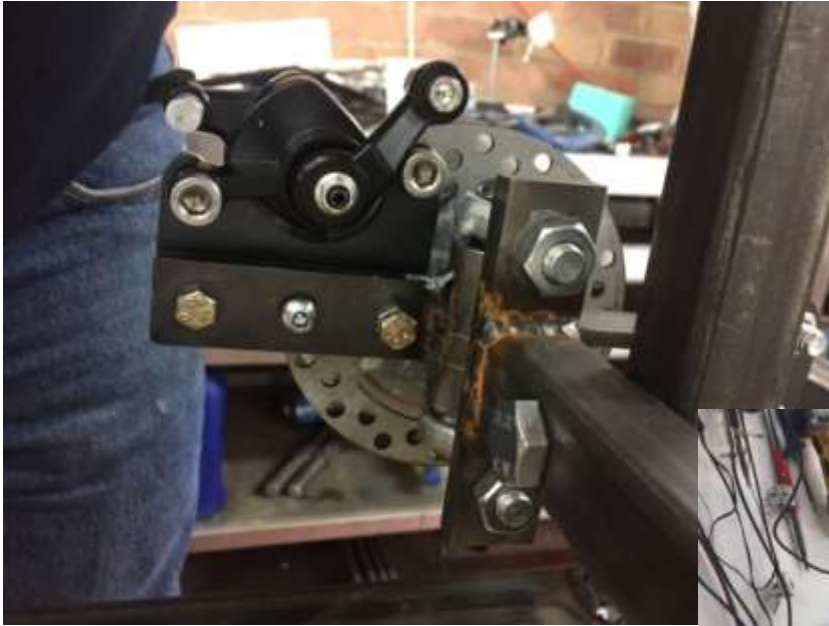
Turn Cart upside down and attach the 12.5mm ply as per drawing. Drill and tap all holes and use M6 panel fixings.

Fix harness brackets in position shown as per drawing





Fit front steering components, hubs, wheels, steering rods, steering column.



Fit rear hub assembly, wheels and
brakes all as per drawing





Cut and paint/spray
body panel, metal,
ply or any other
suitable material
may be used.



Panels should be fixed
with self tapping screws
to allow you to remove
when necessary



Cut and weld the nerf bars as per cutting list 7, ensuring square. Fit as per drawing

Note.
Fitting these after the body panels allows easier access to drill and fix the panels



Strip frame and paint/spray your desired colour along with all other sundry parts.



Preassemble all painted parts, loosely fit all nuts and bolts.





Assemble all parts together, along with running the brakes, ensuring they are clear the body panels, also allowing them to kink free. Left to left and right to right.





Fit the harness to the pre welded points ensuring all nuts and bolts are locked off and tight.

Finished article



Fit wheels and tyres, and come join us racing racing.

